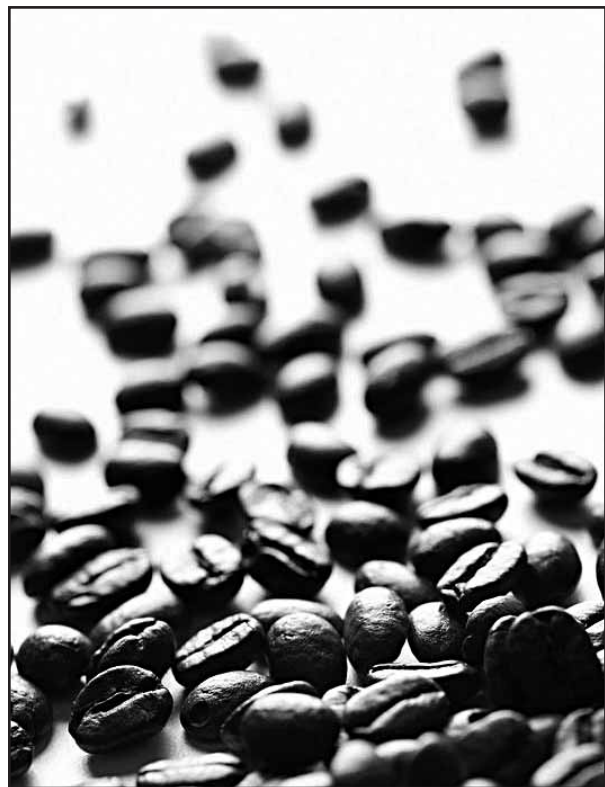


# Global commodity builds local communities



By Cameron Barnett

Thanks to two local businesses, now residents of Chatham and Orange Counties can support a local charity, a global non-profit, and the local economy—all while enjoying their morning cups of coffee.

How? Meet Café Femenino, a non-profit organization dedicated to supporting groups of women in several Latin and South American countries who grow, harvest, and sell their own coffee. Women in Peru, Brazil, Mexico, Colombia, and Guatemala whose families belong to coffee cooperatives in their countries receive administrative and grant support from Café Femenino for their own coffee producing operations. The women, many of whom struggle with abuse and difficult social circumstances, sell their coffee products for a premium price, thanks to the work of Café Femenino. Their earnings help them to strengthen their whole communities and to improve their quality of life.

Enter Robbie Roberts, owner of Joe Van Gogh

coffee company, who buys beans from the women of the Fair Trade Certified co-ops Café Femenino supports. Roberts tried the women's coffee beans when the organization was founded; he liked their product, and continues to purchase the beans for his roasting operation.

## PHILANTHROPY

Recently, Pittsboro Cooperative Grocer Chatham Marketplace has partnered with Hillsborough-based Joe Van Gogh coffee company to sell Joe Van Gogh roasts of the Café Femenino beans. For every pound of coffee sold, Chatham Marketplace and Joe Van Gogh will donate fifty cents to Chatham County's Family Violence and Rape Crisis Services.

These relationships create a snapshot of the cooperative model of business at its best. Local communities work together to improve the quality of life for everyone involved—and they also work with other cooperative groups to help them do the same.

That all adds up to one delicious cup of joe.

*Cameron Barnett is marketing director and ownership coordinator at Chatham Marketplace.*

# Giving to Chatham Hospital's beautiful new home

By Carol Straight

For more than 50 years the people of Chatham County have been able to come to Chatham Hospital knowing they'll receive quality health care in a warm and caring environment. The hospital remains committed to meeting the needs of the growing and changing community. Excitement is building as the new Chatham Hospital, located near the intersections of Highways 64 and 421, is set to open in about 5 months.

The hard part begins when Chatham Hospital has to pay back the debt incurred in building the new state-of-the-art facility. Friends of Chatham Hospital have organized a Philanthropy Campaign to help raise money so that the quality health care that the residents want and need will be continued.

To recognize major contributors, a number of memorial and honor possibilities, including rooms and sections of the new hospital have been identified and can be dedicated in honor of a family member, civic group or business. Prominently displayed plaques will identify the honorees. A donor wall will be placed in the lobby to recognize all donors contributing over \$1,000.



An artist's rendition of what Chatham Hospital will look like.

Several organizations and businesses have already contributed funds to the Philanthropy Campaign, including the Rotary Club and the Town of Siler City. The Basic Group made the first donation.

Howard and Harry Lee Horney have chosen to sponsor the courtyard. They have stated that they are interested in leaving a legacy to this community. Bill Milholen and Charles Johnson, co-chairs of the Philanthropy Campaign, were early donors and believe strongly in the importance of giving back to the community.

Other benefactors include Siler City Pharmacy, Brookwood Farms, Fidelity Bank, Angus and Margaret Currie, Mark and Elizabeth Zeringues, RBC Centura, Wachovia, the Wren

Foundation, Townsend's, Don and Margaret Tarkenton, Mike and Mary Grace McCoy, Hart Furniture Co., Edith Johnson, Mark and Tiki Gwynne, Jim and Anne Marie Schwankl, Mary John and Alan Resch, Barry Hayes, Travis Owen, Byron Hoffman and Carol and David Straight.

The hospital has also secured grants from the Cannon Foundation and the Duke Endowment in support of this project.

No gift is too small. Every contribution means better health care for everyone. Contributions are tax deductible and donations can be spread out over several years.

Those interested in contributing to the Chatham Hospital Philanthropy Campaign can go to

[www.chathamhospital.org](http://www.chathamhospital.org) and download a pledge form or contact Carol Straight at 919.663.9101.

*Carol Straight is Chief Executive Officer of Chatham Hospital.*

## HELP CHANGE LIVES

Donate Your Unneeded Items

We will pick them up and sell them in our Home Stores where all profits go toward building homes in partnership with families in need in Chatham County.

**Scheduled pick-ups are FREE & Donations are tax deductible**

We accept almost everything (except clothing) including, furniture, house wares, appliances, cabinets, building materials & electronics.

## HOME STORES

542-0788  
467 West Street • Pittsboro  
Open Mon.-Fri. 10-6, Sat. 8-4



8:30 am reflective & 10:00 am coffeehouse worship  
kid's club. adult stuff & souljourn at central carolina community college  
in pittsboro



919-542-3244

[www.gracepointcommunity.org](http://www.gracepointcommunity.org)

think with your heart. move with your soul.